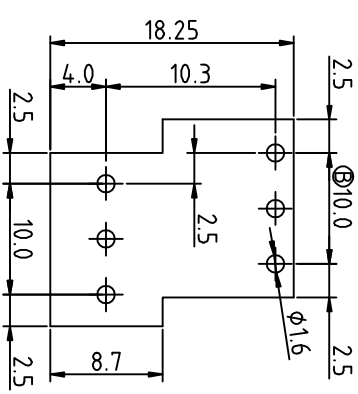


N=Number of contacts
P.C.B LAYOUT



SIGN	DATE	DESCRIPTION	APPROVER

Technical Data:

Material:

- Contact(metal housing): Brass Machined.
- Terminal screw: Steel galvanized and achromatized.
- Solder Pin: Brass with Tin plated
- Insulator body(housing): Polyamide(Glass filled)(UL 94V-0)

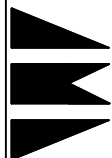
Electrical

- Voltage rating: 300VAC
- Current rating: 10 Amps/way max
- Contact resistance: $20m\Omega$ (max)
- Insulation resistance: $5000M\Omega$ /1000V
- Withstanding Voltage: 1500VAC(1min) Test time=60sec/1pcs
- Wire range: 12-22AWG

Mechanical:

- Torque: 4kgf.cm/M2.5
- Operating temperature: -33°C to +120°C
- Soldering reliability:
Test temperature= 250°C±10°C
5 seconds max

POLE	3P	
A	NX5.0	15.0
B	(N-1) X5.0	10.0



杰科电子有限公司
JIE KE ELECTRONICS CO., LTD.

PART NAME: JK1271A-500 3P

TITLE:

PART NO.:

DWG NAME:

APPROVED BY

CHECKED BY

DESIGNED BY

DRAWN BY

CUSTOM NO.:

UNITS:

SCALE: 2:1

REVISION: B3

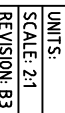
Tolerance
X ±0.50
XX ±0.30
XXX ±0.10
X* ±1*

俊杰

孙学峰

杨丽霞

杨丽霞



1

2

3

4

5

6

7