

SIGN	DATE	DESCRIPTION	APPROVER

Technical Data:

Material:

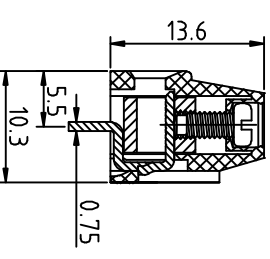
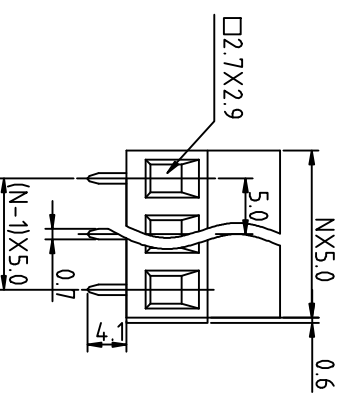
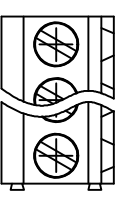
- Contact(metal housing): Brass Machined.
- Terminal screw: Steel galvanized and achromatized.
- Solder Pin: Brass with Tin plated
- Insulator body(housing): Polyamide(Glass filled)(UL94V-0)

Electrical


- Voltage rating: 300VAC
- Current rating: 15 Amps/way max
- Contact resistance: 20m (max)
- Insulation resistance: 5000M /1000V
- Withstanding Voltage: 2000VAC(1min) Test time=60sec/1pcs
- Wire range: 12-22AWG

Mechanical:

- Torque: 4kgf.cm/M2.5
- Operating temperature: -33°C to +120°C
- Soldering reliability:
Test temperature= 250°C±10°C
5 seconds max



N=Number of contacts
P.C.B LAYOUT

 <p>杰科电子有限公司 JIE KE ELECTRONICS CO., LTD.</p>		PART NAME: JK128L-500		TITLE:	
		PART NO.:		DWG NAME:	
APPROVED BY	CHECKED BY	DESIGNED BY	DRAWN BY	CUSTOM NO.:	UNITS: mm
岑杰		孙学丰			SCALE: 2:1
				REVISION: B3	Tolerance
					X ±0.50
					XX ±0.30
					XXX ±0.10
					X° ±1°